

COMPANY PROFILE



P & M ENGINEERING (PVT) LTD

BUSINESS REG. NO. – PV94691



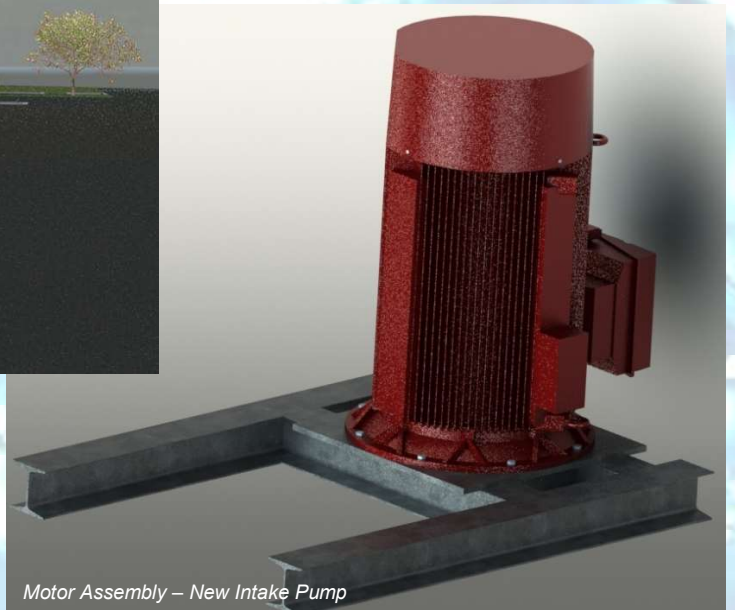
Ambathale Storm Water project - new penstock installation



Ambathale Storm Water project - new penstock actuator installation



Ambathale Treatment plant – New Ellie House Pump Station



Motor Assembly – New Intake Pump

VISION

To become the most respected and successful engineering solution provider within the water and waste water industry.

MISSION

Utilizing our human capital to win the trust among the veteran engineering professionals in the field, whilst continuously developing internal technical capabilities to stay up to date with the latest technical advancements related to the water and waste water industry.

CORE VALUES

Experience

We promote real engineering knowledge and attention to detail. Every individual in our team will be sufficiently experienced and knowledgeable to recommend the most suitable solution for the given customer requirement.

Commitment

We are committed to deliver the most technically feasible solution to the client which will give the highest return on investment.

Teamwork

We believe the teamwork will be the key to deliver seamless performance outcome which will eventually uplift the company reputation and the brand excellence.

Respect

We respect our employees regardless of gender, race or religion and inspire them to be the best they can do.

Results

We focus the intended end result from the beginning, and strive towards achieving the best, by aligning all our tasks effectively and efficiently.



About Us...

P&M Engineering (Pvt) Ltd is an engineering company established in 2013 with special focus on supply, installation and commissioning of Specialized equipment used in the water and wastewater industry. Formed by three qualified professional engineers with more than 45 combined years of solid experience in the water industry.

P&M Engineering (Pvt) Ltd has earned a very good reputation as a supplier and a competent designer within the water and wastewater industry.

MAIN CLIENTS (GOVERNMENT RELATED AGENCIES)

1. National Water Supply and Drainage Board
2. Ministry of Megapolis and Western Development
3. State Engineering Corporation

OTHER CLIENTS

1. Kolon Global Corporation
2. Sierra System Engineering (Pvt) Ltd
3. Salcon Engineering Berhad
4. General Sales Company (Pvt) Ltd
5. Power China Corporation limited

OUR WORK PHILOSOPHY

We hold true to the age-old principles of hard work and dedication. Our corporate culture sees to it that every task is completed with maximum attention to detail, absolute focus and pride. Our working environment nurtures intellectual independence, talent and creativity. We deliver what we promise whilst always believing that there is no shortcut to good work.

PROJECT IMPLEMENTATION POLICY

Our project implementation policy addresses all aspects of project initiation, planning and design, execution, monitoring and control and closeout phases. It has been specially refined to address needs that concern the Mechanical, Electrical, Instrumentation, Control and Automation (M&E and ICA) designs of water and wastewater projects. We are therefore able to predict the bottlenecks, analyze critical paths and constraint costs to a greater degree of tolerance, ensuring that the projects are rolled out within the budget, within schedule and comply with technical specifications.

PRODUCT PORTFOLIO

We offer a range of products for various applications.

- ✦ Bernard Controls electric actuator solutions
- ✦ Bidapro Penstocks gate solutions
- ✦ Camozzi pneumatic solutions
- ✦ Singer control valve solutions
- ✦ JASH penstock gates, fluid control equipment and screen solutions
- ✦ MEX computerized maintenance management systems (CMMS)
- ✦ Vci KNOBS filter nozzles
- ✦ SISMAT flow control solutions
- ✦ Prominent dosing and chemical equipment and solutions
- ✦ eNVIROFLEX Peristaltic pumps and hoses
- ✦ Daqchem vertical mixers



Ambathale Treatment plant – main pump station upgrade to cater for 2040 demand

Actuators



Penstocks



Control Valves



Filter Nozzles



Stop logs



Polymer dosing unit



Peristaltic pumps and hoses



Jash hydro test facility is capable of testing sluice gates up to 6000x5000 mm size and valve up to 3000mm diameter.

These images were captured during the Factory acceptance test carried out for 2500x2500 actuated penstock gates.



Jash cast iron penstock testing facility in Indore- India

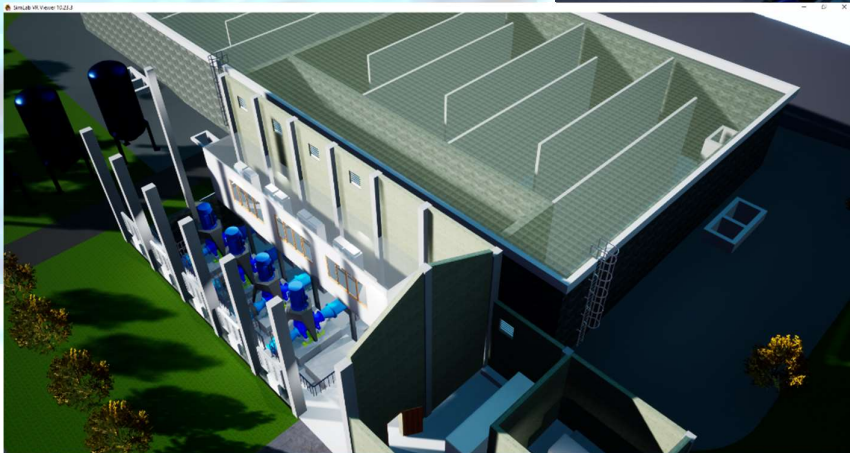
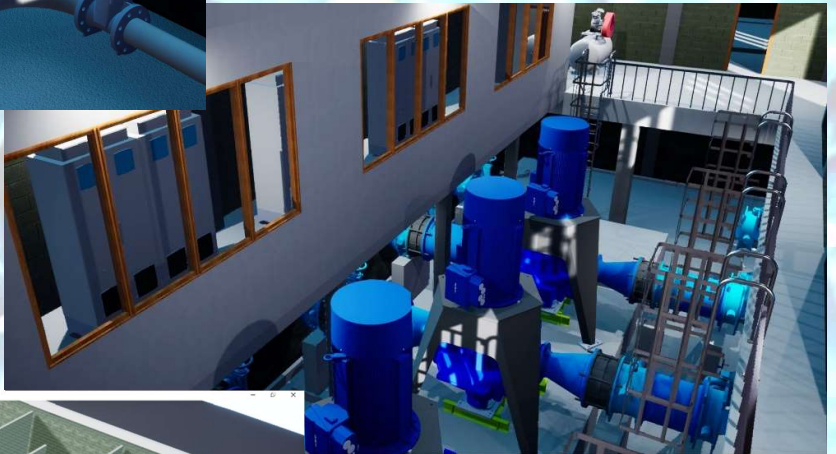
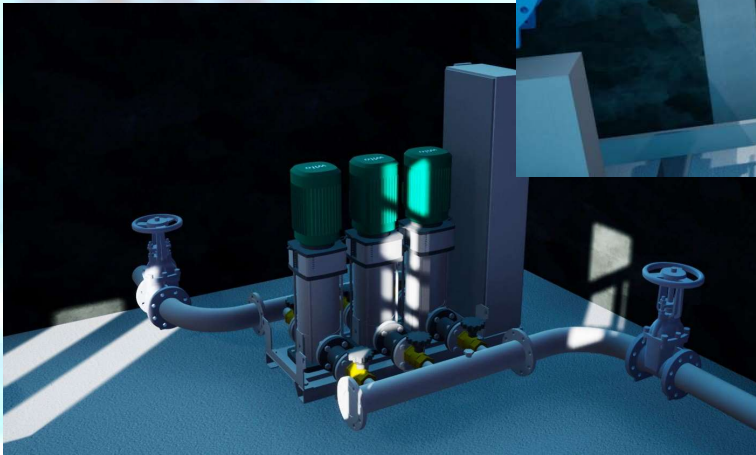


SERVICE PORTFOLIO

P&M Engineering has involved in few major local water projects as the main M&E designer. In addition to that, company has successfully completed an engineering design of a sewer pumping network for Oman water authority- Haya water.

With this P&M Engineering local and international recognition, company has already started investing on BIM to stay up to date with the latest industry advancements. Already the company has implemented 3D and VR technology in some of the key projects and expecting to expand the resources further to meet potential future requirements.





PROJECT REFERENCES

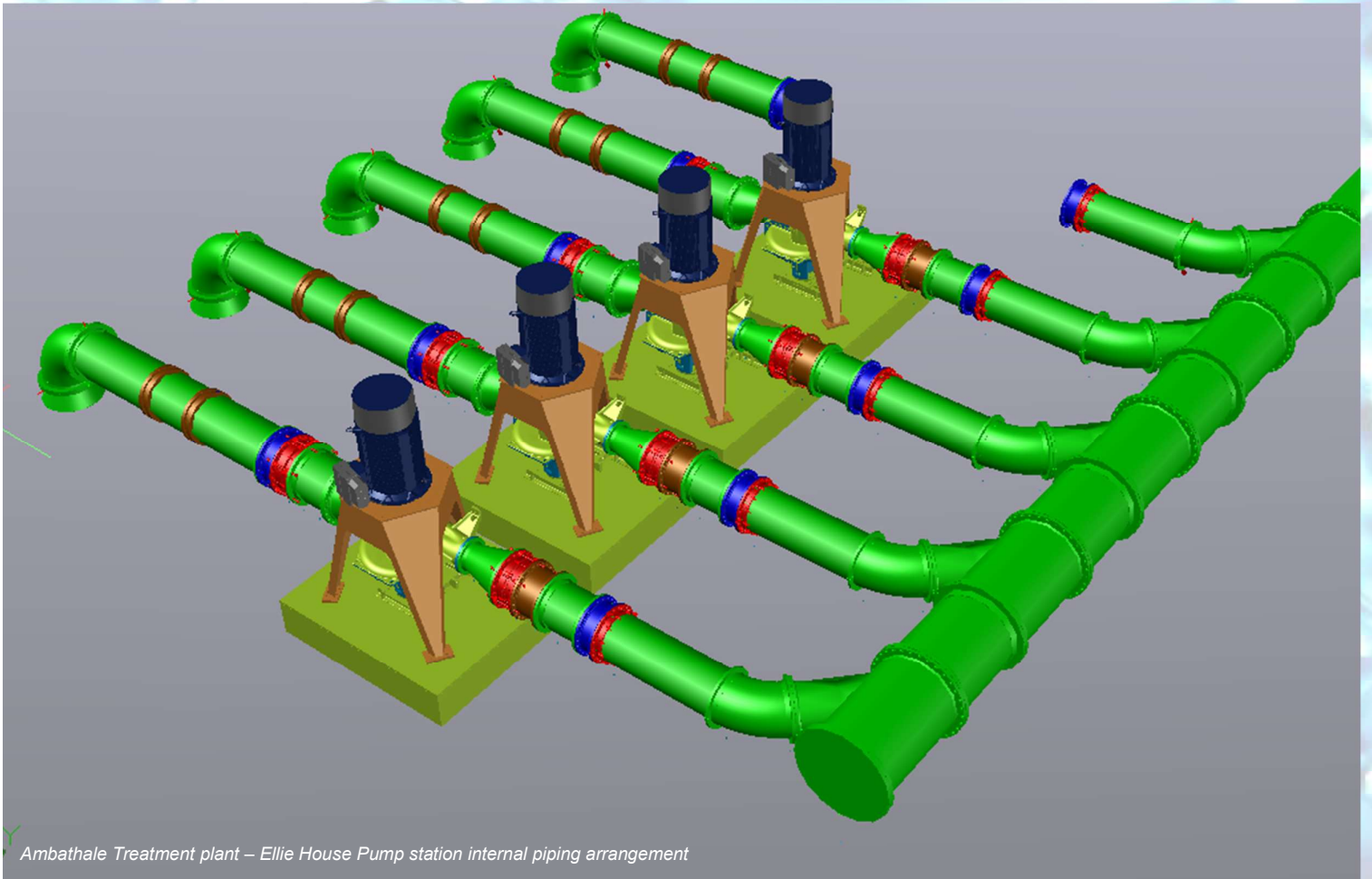
- 1) Ambathale Water Supply System Improvements & Energy Saving Project (Design and built)
 - M&E Design partner to the main Contractor, Zhongnan-SZSG-JH JV
- 2) Anuradhapura North Water Supply Project – Phase 1
 - Professional Consultancy Services to the main Contractor, Access Engineering PLC
 - Preparing all mechanical, electrical & Instrumentation (MEI) submissions complying to employer's requirement and liaising with relevant parties of the project in obtaining material approvals of the equipment
 - Preparation of installation method statements and shop drawings
- 3) Kandy City Wastewater Management Project
 - Professional services & engineering consultancy to Macrotek services (Pvt) Ltd
 - Design, engineering and implementation of MEX Computerized Maintenance Management System (CMMS) for Kandy Wastewater Management Project
- 4) Ambathale Storm Water Pumping Station
 - Subcontractor to the main contractor, Salcon Engineering Berhad
 - Engineering consultancy and supply of 5Nos of 2500x2500 actuated penstock gates
- 5) Bandaranaike International Airport Development Project – Phase II – Stage 2
 - Main contractor, Hazama Ando Corporation
 - Engineering consultancy and supply of penstock gates and valve solutions
- 6) Katana Water Supply Project
 - Partnering with KLA Engineering, subcontractor to CATIC-China Geo Eng. JV
 - Professional service consultancy for rehabilitation and M&E system implementation at Bambukuliya treatment plant, Saunders place pumping station and Katunayake pumping station and, testing and commissioning
- 7) Malimbada Water treatment plant
 - Supply and installation of penstock valves and accessories for Malimbada water supply scheme.

8) Biyagama Water treatment plant

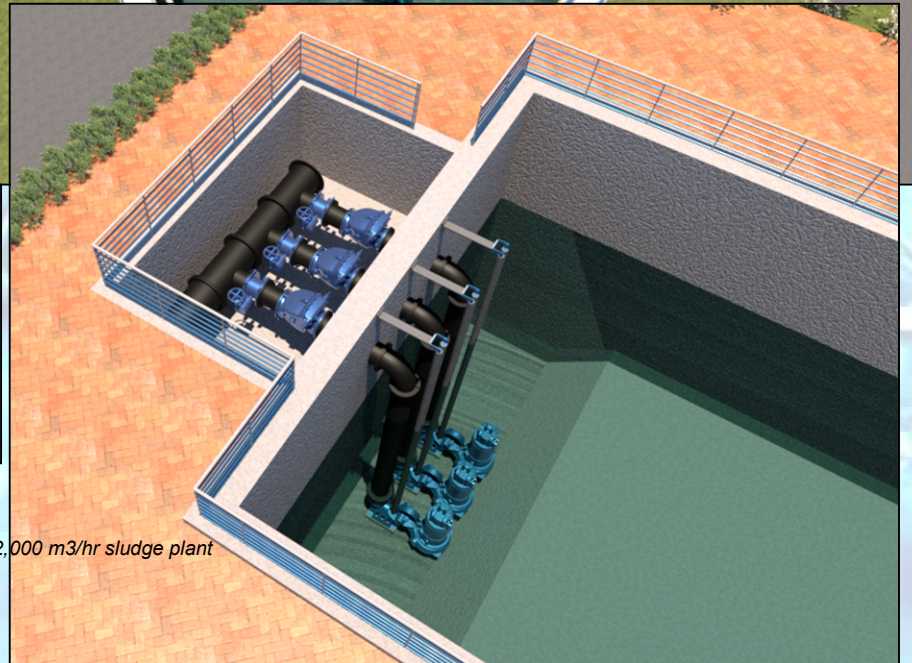
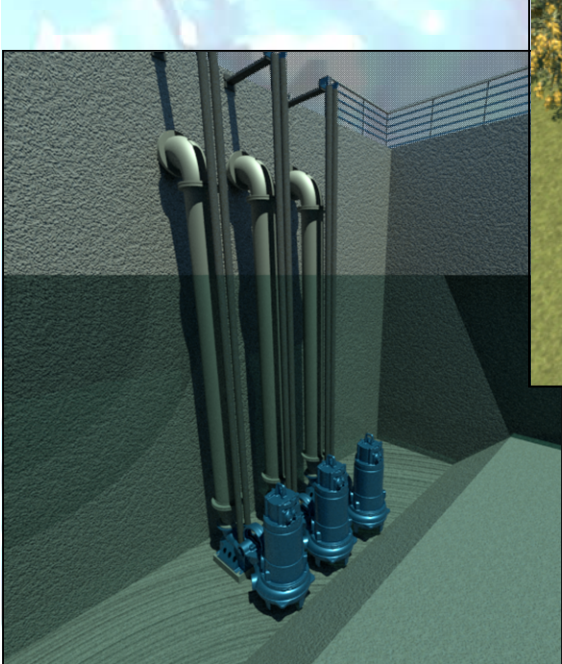
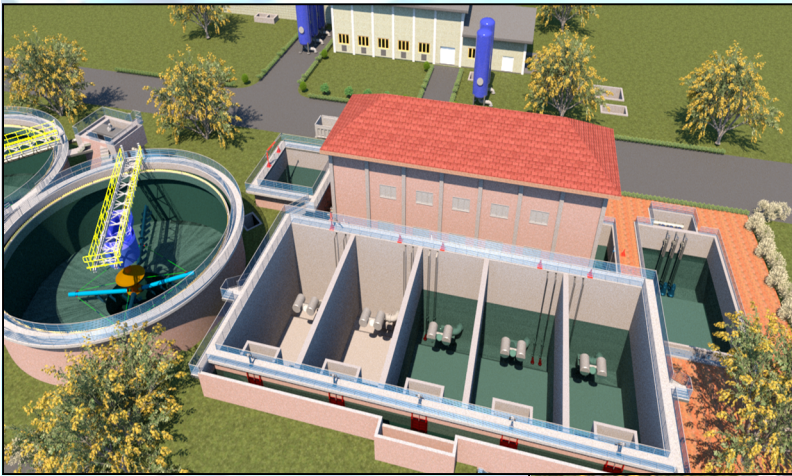
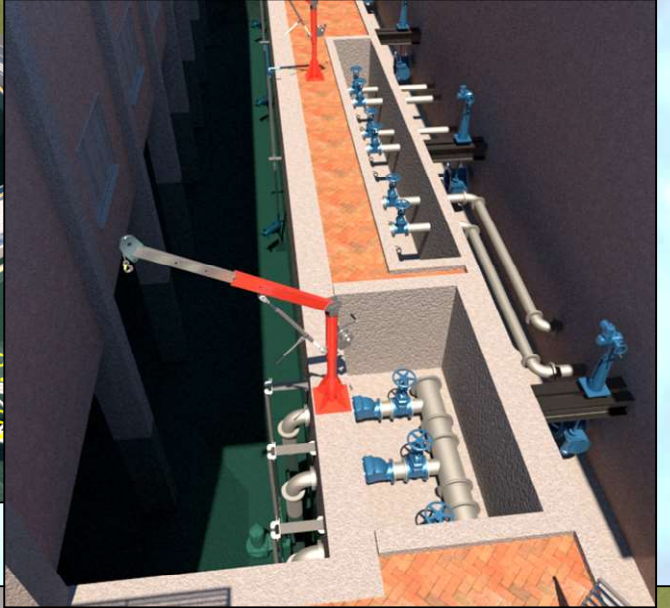
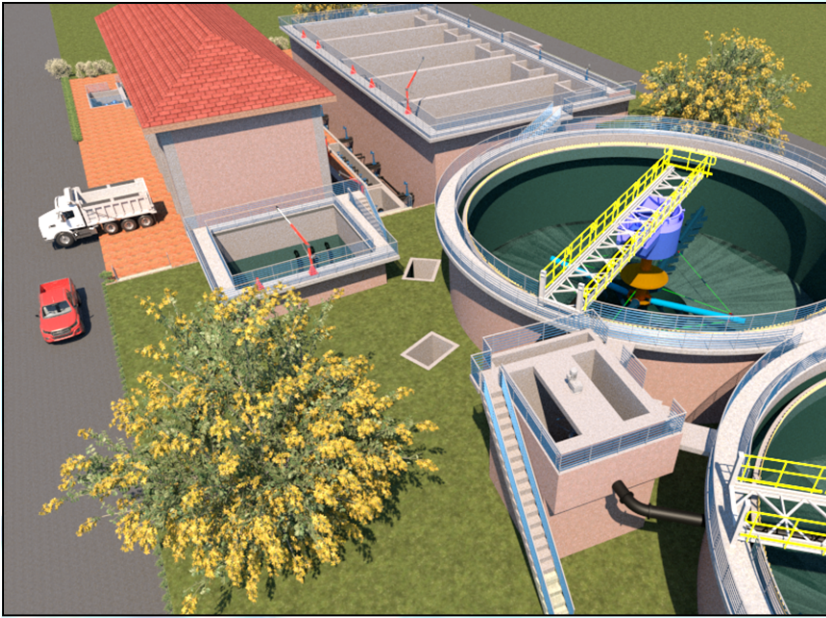
- Long term supplier of M&E Equipment and spare parts Including actuators, peristaltic pumps.



Kelani Right Bank phase 1



Ambathale Treatment plant – Ellie House Pump station internal piping arrangement



Ambathale Treatment plant – BIM model of the 22,000 m³/hr sludge plant



P & M ENGINEERING

113/6 Treasure Gardens, Soratha Mw, Gangodawila, Sri Lanka – 10250

Tel: +94 (0) 117021242, +94 (0) 112804748 Fax: +94 (0) 711004825

Web: www.pandmengineering.com

Email: inquiry@pandmengineering.com



sismat



ProMinent®